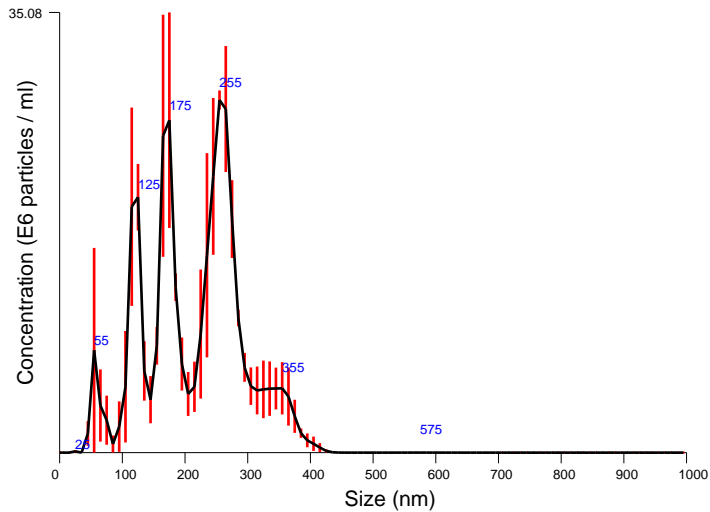


FTLA Size / Concentration graph for Experiment:
Capture 2022-10-06 22-33-49



Averaged FTLA Size / Concentration
Red error bars indicate +/- 1 standard error of the mean

<div>Included Files</div> <div>Capture 2022-10-06 22-34-39 Capture 2022-10-06 22-35-49 Capture 2022-10-06 22-36-55</div> <div>Details</div> <div><div>NTA Version:NTA 3.0 0060</div><div>Script Used:SOP Standard Measurement 04-24-10PM 13Mar2020.txt</div><div>Time Captured:22:33:49 06/10/2022</div><div>Operator:Ruth</div><div>Pre-treatment:</div><div>Sample Name:S4.1</div><div>Diluent:WATER</div><div>Remarks:</div></div> <div>Capture Settings</div> <div><div>Camera Type:SCMOS</div><div>Camera Level:9</div><div>Slider Shutter:450</div><div>Slider Gain:250</div><div>FPS45.5</div><div>Number of Frames:1363</div><div>Temperature:22.0 °C</div><div>Viscosity:(Water) 1.0 cP</div><div>Dilution factor:Dilution not recorded</div></div> <div>Analysis Settings</div> <div><div>Detect Threshold:24</div><div>Blur Size:Auto</div><div>Max Jump Distance:Auto: 6.4 - 10.9 pix</div></div>	<div>Results</div> <div><div>Stats: Merged Data</div><div><div>Mean:209.7 nm</div><div>Mode:258.9 nm</div><div>SD:77.8 nm</div><div>D10:105.3 nm</div><div>D50:218.2 nm</div><div>D90:303.9 nm</div></div><div><div>Stats: Mean +/- Standard Error</div><div><div>Mean:212.3 +/- 10.3 nm</div><div>Mode:229.8 +/- 30.1 nm</div><div>SD:75.9 +/- 3.4 nm</div><div>D10:107.1 +/- 9.8 nm</div><div>D50:216.3 +/- 19.6 nm</div><div>D90:309.2 +/- 17.1 nm</div><div>Concentration:3.46e+008 +/- 4.53e+007 particles/ml 17.6 +/- 2.3 particles/frame 20.0 +/- 3.6 centres/frame</div></div></div></div>
---	--